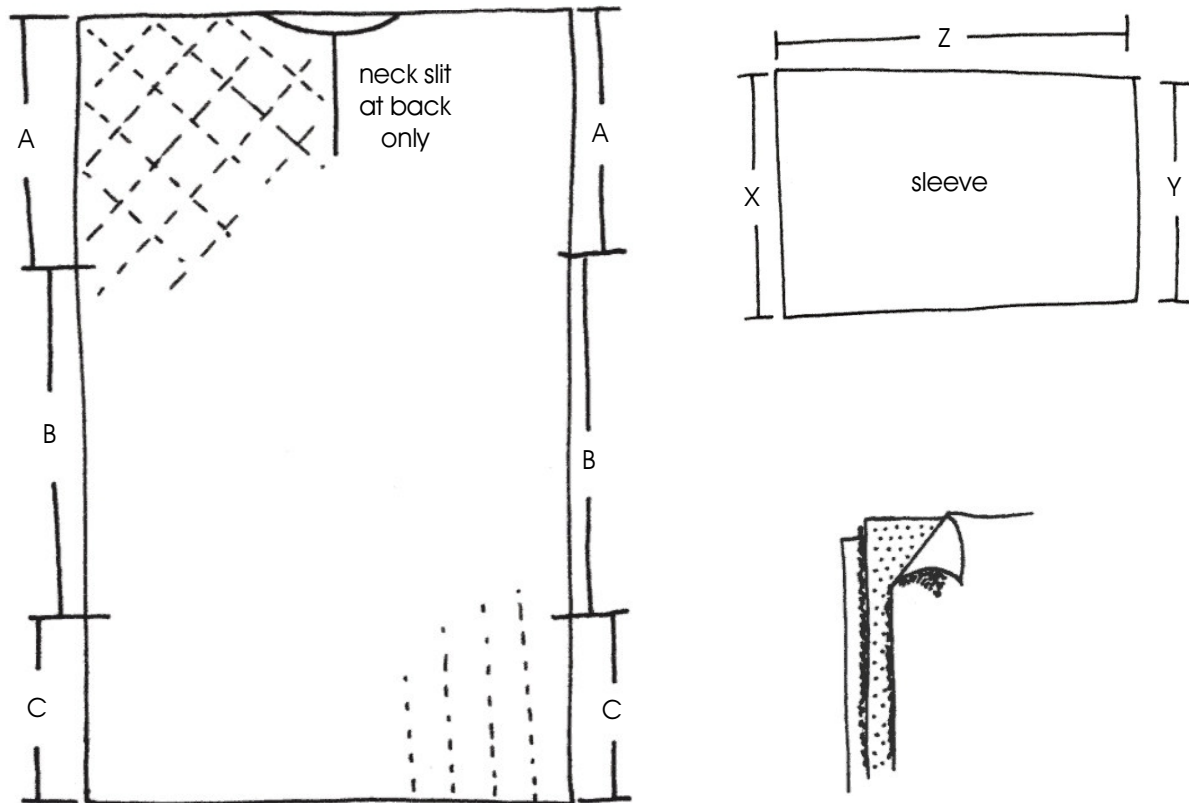




# LEVIATHAN

## BASIC PADDED JACK PATTERN



This pattern describes a very basic way of making a good-looking padded jack. Whilst it is not made in an historically accurate way, it will look the part and, more importantly, it will protect you from the weight of chain mail. The padded jack can also be worn in LRP as padded armour.

You will need :

Heavy cotton cloth and hollow fibre padding (the type some sleeping bags use); webbing strips for hemming. Eyelets and laces to attach sleeves.

A simple optional extra is the addition of leather patches on the shoulders to add more protection to the wearer and to prevent your armour ripping the fabric.

A very nice option, but expensive, is to use light leather, hair side out, as the outer fabric. If choosing this option, use a sewing machine powerful enough to stitch leather!

Read the instructions through once before you even buy your material, let alone cutting! The stitching method reduces

measurements very quickly!

Measurements :

A + B + C = nape of shoulder to one hand above knee

A = nape of shoulder to tip of sternum

B = tip of sternum to top of femur

C = top of femur to one hand above knee

Width = chest from armpit to armpit

X = A x 2

Y = around mid forearm x 1.5

Z = nape of shoulder to mid forearm

All measurements should be very generous, even to the extent of adding ten or twenty centimetres before cutting!

Remember that the jack will be worn over other clothes, so add a little extra to give comfort room. Also, add a couple of centimetres for hemming and joining.

Procedure :

Cut four of the torso. If you are using leather as an outer, cut two of the torso from heavy cotton, and two from the leather. The neck slit should only be cut in the rear, therefore only on two of the torso shapes.

Cut two of the torso from the polyfibre filling.

Make a sandwich from one layer of heavy cotton, the polyfibre, and another layer of cotton, or leather, as shown in the diagram.

Now stitch your piping. This can take the form of vertical parallel lines about two inches apart, or in large diamonds, with a broad width of about 2 inches, as shown in the diagram. Historically, these tubes or sections would be individually filled with wool or odd pieces of wadding. This method would allow for slightly easier movement but, more importantly, it makes for better ventilation. However, our method is a fast and dirty LRP prop, so you can make your own mind up.

Do not hem the piece until you have stitched the piping. You will now see why the cutting was generous, as the stitching has compacted the material substantially.

When you are happy with your piping, and the overall size, stitch the front to the back along the shoulder line, and at the sides in area B. Leave C open as a vent to ease movement.

The neck hole should be cut small at first, then enlarged gradually to make a perfect fit.

Now hem along the neck hole, the sleeve holes and the bottom and vent with the webbing strips.

If you intend to fit sleeves, add eyelets to the webbing hem around the sleeve hole.

Sleeves:

Cut four pieces, or two and two if using a leather outer.

Again make your sandwich using the polyfibre as a filling.

Stitch your piping, either strips or diamonds. If strips, they should run from the wrist to the shoulder, not around the

arm. The long axis of the diamonds should point up and down the arm.

When you are happy with the length of the sleeve, stitch along the long axis Z. Then turn the sleeve inside out, leaving the stitching inside.

Hem the shoulder and cuff ends of the sleeve.

To attach the sleeve to the bodice, again put eyelets in the shoulder hem, being careful to match them up with those on the bodice.

Lace through these eyelets to attach the sleeves.

Neck vent :

The neck line of the jack should be quite high, and as tight as is comfortable. The vent should lie at the back, and can be done up with a lace and eyelets, or small buckles.

Colours :

Once again, drab naturals are best. Black was an expensive colour to dye in history, using oak galls and bark. If you are using natural cotton or canvas, beware that light colours will get filthy very quickly with sweat and oil or rust from the chain mail. The leather outer option takes care of colour for you.

lacing the sleeve to the bodice

